

# Are Migrants Selected on Motivational Orientations? Selectivity Patterns amongst International Migrants in Europe

Javier G. Polavieja<sup>1,\*</sup>, Mariña Fernández-Reino<sup>2</sup> and María Ramos<sup>1</sup>

<sup>1</sup>Universidad Carlos III de Madrid., C/Madrid, 135, Getafe, 28.903, Madrid and <sup>2</sup>The Migration Observatory, Centre on Migration, Policy and Society, University of Oxford, Oxford, UK

\*Corresponding author. Email: javier.polavieja@uc3m.es

Submitted June 2017; revised June 2018; accepted June 2018

## Abstract

Migration scholars often assume migrants are the most ambitious and motivated individuals of their home countries. Yet research on motivational selectivity is scant. We present the first systematic cross-national analysis of migrants' selectivity on achievement-related motivational orientations (ARMOs). We measure ARMOs using a validated scale that combines orientations towards socio-economic success, risk, and money. Matching the European Social Survey and the World Value Survey cumulative data sets, we examine whether international migrants recently arrived in Europe are more achievement-oriented than those observational equivalents that do not migrate. We focus on migrants from nine different origins (France, Germany, the United Kingdom, Poland, Romania, Turkey, Morocco, Brazil, and Andean countries) sampled at different European destinations varying in gross domestic product, type of welfare state, and linguistic distance. Our findings seem to contradict the arguments about a common migrant personality put forward by social psychologists, as well as most of the predictions of standard economic models. We do find, however, some support for the welfare magnet hypothesis, as well as for the expectation that gender traditionalism favours negative selectivity of migrant women. We show that reported estimates are not driven by educational selectivity and are unlikely to be biased by destination effects.

## Introduction

Over the past decade, research on migrants' selectivity has become a central issue in migration studies (see Feliciano, 2005a,b; Pedersen, Pytlíkova and Smith, 2008; Belot and Hatton, 2012; Ichou, 2014; Ichou, Goujon and the DiPAS team, 2017). Most of these studies (but not all) have found that migrants are, on average, positively selected on educational qualifications when compared to their non-migrant counterparts. Migration scholars have also often assumed migrants differ from their non-migrating equivalents in a

number of usually unobserved motivational characteristics that make them more willing to seek the opportunities and take the risks involved in the migration decision. Chiswick (1978) and Portes and Rumbaut (1996), for example, argued that migrants are the most ambitious, motivated, and risk-taking persons of their home countries. Of course, *if they are*, this should also reflect in their labour-market performance at destination, since motivational orientations are also productivity-enhancing traits, that is, personal characteristics leading to higher labour-market

returns (Heckman, 2006; Cunha and Heckman, 2007). Potential motivational selectivity is thus highly consequential not only for the migration decision but also for the study of immigrants' structural incorporation.

Despite theoretical claims, selectivity on motivational orientations has rarely been tested empirically. A few exceptions can be found in the field of social psychology. Research in this field suggests that migration is associated to high achievement motivation (Boneva *et al.*, 1998), high power motivation (Boneva *et al.*, 1998; Frieze *et al.*, 2004), high work centrality (Frieze *et al.*, 2004), low family centrality (Frieze, Hansen and Boneva, 2006), and low affiliation motivation (Boneva *et al.*, 1998). In addition, evidence suggests there is also selection on relevant personality traits such as openness to experience, agreeableness (Jokela, 2009), neuroticism, or extraversion (Silventoinen *et al.*, 2008); in temperament traits like sociability, activity, and emotionality (Jokela *et al.*, 2008); as well as in attachment styles (Polek, Van Oudenhoven and Berge, 2011). This association between certain motivational and psychological dispositions and the migration decision has given support to the idea of a 'migrant personality', i.e. a personality pattern that, together with other psychological characteristics, interacts with environmental factors and opportunities to produce the actual migratory behaviour (Boneva *et al.*, 1998; Boneva and Frieze, 2001; Frieze, Hansen and Boneva, 2006; Polek, Van Oudenhoven and Berge, 2011).

Insightful as it is, the pioneering work of social psychologists suffers, in our view, from three important limitations. First, the samples used in these studies are usually student samples not representative of the migrant population. Second, most of these studies compare immigrants' traits to those of natives with the same sociodemographic characteristics, instead of comparing migrants to their non-migrating co-nationals (Bonin *et al.*, 2009). Third, to our knowledge, all these studies are single-country studies, and this means we still lack a systematic comparison of motivational selectivity patterns across origin and destination countries. Because selectivity is likely to depend on the combination of both origin and destination characteristics, single-country studies can only offer a partial account of selection on motivational traits.

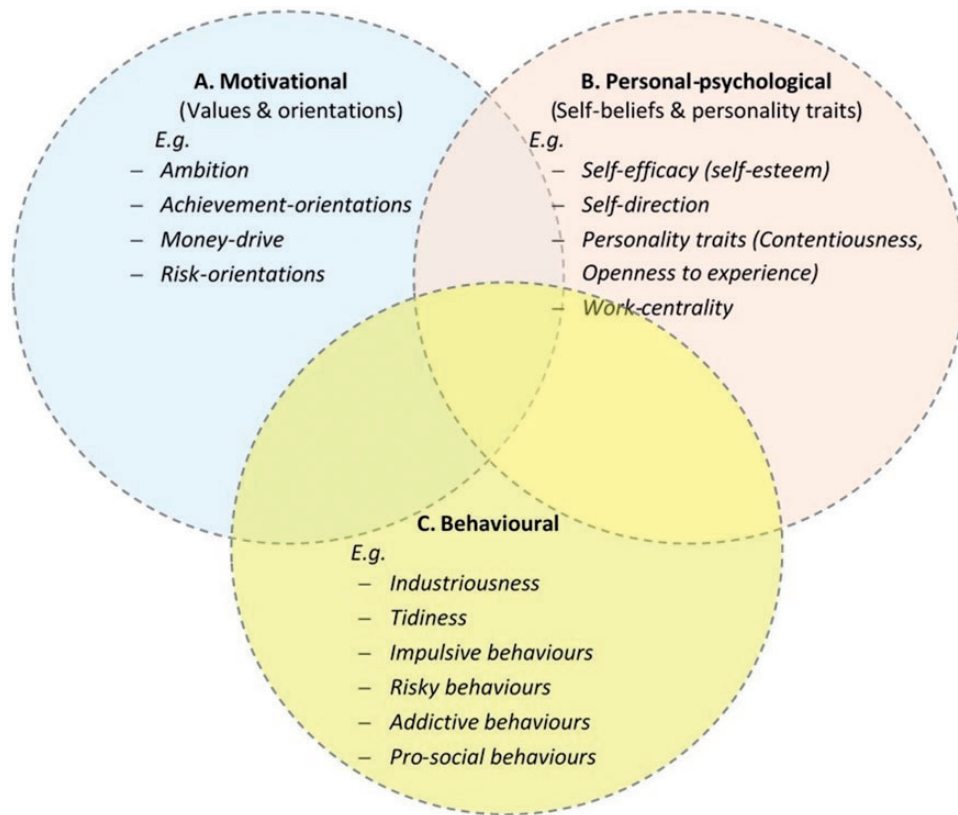
This study provides the first systematic assessment of the selectivity of migration flows on achievement-related motivational orientations (ARMOs) for a set of origin and destination countries. We focus on international migrants to European destinations from nine different origins (i.e. France, Germany, the United Kingdom, Poland, Romania, Turkey, Morocco, Brazil, and

Andean countries). We compare the ARMOs of recently arrived migrants sampled at different European destinations with those of their non-migrating co-nationals sampled at each respective country of origin (stayers). This allows us to test several empirical predictions drawn from different theoretical arguments, which we review and develop below.

## Motivational Orientations: Definition

We define ARMOs as deeply internalized value orientations that guide people's attainment-related actions in hierarchical and competitive contexts. ARMOs capture people's drive for social and economic attainment and their willingness to take risks to succeed. Achievement-oriented individuals should thus be more likely to make the investments, take the risks, and seize the opportunities necessary to improve on their chances of socioeconomic success, including those investments, risks, and opportunities involved in the decision to migrate internationally. ARMOs are thus part of what economists call non-cognitive productivity-enhancing traits (see Bowles, Gintis and Osborne, 2001; Cunha and Heckman, 2007), which also include a number of psychological and behavioural dimensions, which are represented graphically in Figure 1. Exploring the connection between these different dimensions is beyond the scope of this study.<sup>1</sup>

ARMOs are most probably acquired through early socialization processes, likely in interaction with psychological characteristics (see Boer and Boehnke, 2016; Bowles, Gintis and Osborne, 2001). As other value orientations, ARMOs are considered long lasting and largely stable traits in adulthood (Milfont, Milojev and Sibley, 2016; Schwartz, 2006). Also, because they are motivational, ARMOs are expected to increase individuals' capacity to act in the face of constraints (Polavieja and Platt, 2014). Our definition of ARMOs thus connects to a long sociological tradition that sees values and orientations as internalized engines of action (for reviews see Vaisey, 2009; Polavieja, 2015). We note, however, this long sociological tradition (often called the Weberian or Parsonian tradition) has been contested by so-called 'repertoire' approaches. Repertoire scholars conceptualize values as part of a cultural toolkit people use strategically to make sense of their previously chosen courses of action, as well as of the constraints they face (see Swidler, 2001). Translated to the context of our research question, the *repertoire critique* would imply ARMOs are not real motivating factors in the migration decision but a mere *ex post* rationalization of migrants' lived experiences of migration. This possibility is



**Figure 1.** A heuristic classification of productivity-enhancing (non-cognitive) traits

discussed below under the more general rubric of destination bias (see section Addressing Potential Destination Bias).

### Self-Selection into Migration: Framework and Hypotheses

Prior studies in the social sciences have almost exclusively focused on migrants' selectivity on standard human capital variables and sociodemographic characteristics, particularly education, age, and socio-economic status, which are easy to observe.<sup>2</sup> Most of these studies (but not all) find that migrants are, on average, more educated than their non-migrating counterparts from the same cohort and with the same background characteristics, although the degree of educational selectivity varies significantly depending on the country of origin and the timing of migration (Chiquiar and Hanson, 2002; Feliciano, 2005a; Belot and Hatton, 2012; Ichou, 2014; Ichou, Goujon and the DiPAS team, 2017).<sup>3</sup> Feliciano (2005a), for example, finds positive selection on education in the United States is higher for immigrants coming

from distant countries, and it decreases over time as successive waves of migrants settle in the destination society, a pattern that has also been noted by Takenaka and Pren (2010) and Beine, Docquier and Özden (2011), among others (see also Massey, 1999). Belot and Hatton (2012) find that the occurrence of positive selection in education also decreases when there are colonial legacies and/or cultural similarities between origin and destination countries.

There are several theories of migration, each of which has implications for selectivity theorizing. Standard economic theories stress the role of expected benefits and costs in the migration decision. Expected benefits depend on the returns to migrants' skills relative to the origin country: the greater these returns are at destination (compared to the source country), the stronger the positive selection on skills will be, other things equal (Borjas, 1987). Migrants can also consider access to welfare benefits in their allocation decisions. Arguments about the 'welfare magnet' contend that very generous welfare states can lead to negative skill selectivity, a possibility that has been a particular concern in

Scandinavian countries (see Razin and Wahba, 2015). International migration also entails costs (e.g. transportation, transit fees, settlement, job search, and other transaction and adjustment costs). Because not all individuals can assume these costs, immigrants are expected to be disproportionately drawn from the middle and upper-middle echelons of the income distribution (see Massey *et al.*, 1993). Sociological theories also stress the role of social networks in reducing migration costs and argue that selectivity should decline over time, as migrant networks expand (Massey, 1999). This argument has been readily incorporated into mainstream economic thinking (see Beine, Docquier and Özden, 2011).

The logic of standard economic theories can be easily applied to the study of motivational selectivity simply by noting that there are certain value orientations (e.g. ambition, adventurousness, and risk orientations) and personality traits (e.g. conscientiousness, flexibility, and openness to change) that increase the potential benefits and reduce the expected costs of migration. These typically unobserved characteristics will be all the more important if certain facilitating factors such as a common language or established networks of co-nationals are lacking at destination. The expectations for motivational orientations that follow from standard economic models are thus identical to those of skill selectivity: i.e. economic migrants will tend to be positively selected on motivational traits, and the degree of motivational selectivity will depend on expected benefits and costs.

Standard economic theories of migration have, however, been criticized for providing an over-individualistic account of the migration decision. Stark and Taylor (1991), for example, argues that decisions are actually made by households rather than individual agents as a means to diversify family risks. In a similar vein, sociological theories stress migration decisions are always embedded in social structures, networks, and pre-existing cultural schemas, including gender norms (Massey, 1990, 1999; Portes and Sensenbrenner, 1993; Ryan, 2004; Hadler, 2006; Donato and Gabaccia, 2015). We would argue that an implication of these theories is that those who are 'sent away' by their families need not be particularly selected on ARMOS (in fact, the opposite might be true). A case in point is women from gender-traditional societies migrating for family (re)unification purposes (De Jong, 2010).<sup>4</sup>

A number of specific empirical predictions can be derived from these arguments: First, we should expect that richer countries, as well as countries with more flexible labour markets and greater earnings inequality, will attract more achievement-oriented migrants than poorer countries and countries with more compressed earnings.

This is because the economic returns to motivation should be higher in richer and more unequal societies. Relatedly, according to the welfare magnet hypothesis, we should expect migrants into countries with very generous welfare provision to be negatively selected on ARMOS. Third, we should expect motivational selectivity to be greater the wider the linguistic/cultural distance between origin and destination, since distance increases migration costs. Fourth, for the same reason, selectivity should be higher the greater the geographical distance between origin and destination.<sup>5</sup> Fifth, in the particular case of Europe, we should expect selectivity to be lower for people migrating within the European Economic Area (EEA), as free movement of labour obviously reduces migration costs. Finally, we would also expect women from highly traditional societies migrating for family-related reasons to be negatively (or at least not positively) selected on ARMOS. All these empirical expectations can be tested against the backdrop of the common migrant personality model, according to which we should expect positive motivational selectivity across the board.

## Data, Measures, and Research Design

We use data from the first (2002) to the seventh (2014) rounds of the European Social Survey (ESS), as well as the fifth (2005–2009) and sixth (2010–2014) waves of the World Value Survey (WVS), which contain comparable formulations in the variables of interest. The analyses are restricted to recent migrants to Europe (observed in the ESS data set) born in countries covered by the ESS or the WVS, that is, to migrants in Europe for whom we have corresponding non-migrating equivalents sampled at their countries of origin. Migrants recently arrived to Europe are defined as those that have been living in a given destination country (covered by the ESS) no longer than 5 years.<sup>6</sup> These migrants are then matched to the representative samples of non-migrant co-nationals. For migrants coming from European countries, we use the ESS,<sup>7</sup> while for migrant coming from non-European countries, we use the WVS.<sup>8</sup> Because we logically need a sufficiently large number of migrant observations in the ESS data set to carry out our analyses, we focus on migrant groups with at least 50 observations in each single destination considered. This leaves us with the following nine ethnic origins: Andean countries (Colombia, Ecuador, and Peru), Brazil, France, Germany, Morocco, Poland, Romania, Turkey, and the United Kingdom.

Focusing on recently arrived migrants takes a toll on sample size. To increase potential statistical power, we combine most destination countries into meaningful clusters defined by gross domestic product (GDP),

**Table 1.** Components of the ARMOS scale

Variable	Description	Formulation in the questionnaire	Factor loadings (rotated)
Achievement	Personal success through demonstrating competence according to social standards	<i>Being very successful is important to this person; to have people recognize one's achievements</i>	0.70
Risk	Excitement, novelty, and challenge in life	<i>Adventure and taking risks are important to this person; to have an exciting life</i>	0.69
Money	Social power, authority, wealth	<i>It is important to this person to be rich; to have a lot of money and expensive things</i>	0.77

Notes: Complete formulation in the questionnaire: Now I will briefly describe some people. Would you please indicate for each description whether that person is very much like you, like you, somewhat like you, not like you, or not at all like you? (six-point scale: 1—*Not like me at all*—6—*Very much like me*).

welfare type, and linguistic distance. Seven of the nine migrant groups can only be observed in one single country/type of destination. Only Polish and Romanian migrants can be observed in two different destinations each. The final analytical sample comprises over 71,645 individuals, 70,828 of which are non-migrants and 817 are migrants recently arrived in Europe.

### Measuring ARMOS

Both the ESS and the WVS include a short version of the Portrait Values Questionnaire (PVQ), which comprises 10 different types of value orientations that have cross-country validity (Schwartz, 2006). The PVQ is framed in the surveys as a short verbal portrait of people describing their aims or aspirations, which implicitly indicates the importance that respondents give to a certain value orientation. For example, 'Being very successful is important to her/him. S/he hopes people will recognize her/his achievements' describes a person for whom success and social recognition are important. Once presented with 10 such descriptions, respondents are asked to compare the portrait to themselves. Respondents' own orientations are then inferred from their self-reported similarity to people described in the item.

Of the 10 orientations of the PVQ, we use the three items that have the most obvious attainment-related motivational content: success orientations, risk orientations, and money orientations. Principal component factor analysis (with orthogonal rotation) shows these three items form part of the same underlying construct, yielding the largest factor loadings of the PVQ. Because these loadings are similar in size, we have constructed an additive scale, which is the summed average of the three items. The scale ranges from 1 to 6 and has an average inter-item covariance of 0.75 and a Cronbach's

alpha of 0.6, which is relatively high for only three items (see Cortina, 1993). Table 1 shows the three components of the ARMOS scale along with the motivational goal that each of them denotes their specific formulation in the surveys and their respective factor loadings.

### Addressing Potential Destination Bias

Even though it has been shown that value orientations and personality characteristics are relatively stable and enduring in people's lives (Roberts *et al.*, 2008; McAdams and Olson, 2010; Cieciuch, Davidov and Algesheimer, 2015; Milfont, Milojev and Sibley, 2016), we cannot rule out the possibility that particular experiences at destination change immigrants' motivational orientations. One major source of concern is that migrants experience substantial barriers to a successful socio-economic integration at destination, as a result of which their (originally high) levels of motivation eventually wane (even to appoint where they appear as negatively selected on ARMOS). We address this concern in two main ways: first, because destination influences are unlikely to operate in the short term, we restrict our analytical sample to recently arrived migrants. Second, we investigate empirically whether our estimates for migrants ARMOS are affected by what we would argue are the three destination experiences with the largest transforming potential on motivation, namely, involuntary unemployment, extreme social isolation, and discrimination. We focus on these three experiences because all three are known to have severe consequences for people's health, psychological well-being, and self-esteem (see Pascoe and Richman, 2009; Yang *et al.*, 2016), and hence they are potentially likely to also affect motivation. Finding that ARMOS scores are unaffected by controls for these extreme experiences would thus provide strong support to the

interpretation of differences in ARMOs between migrant as stayers as reflecting true migrant selectivity.

### Model Specification

Selectivity coefficients are estimated using ordinary least squares (OLS) regression following a simple estimation procedure. First, migrants observed at different European destinations are matched to their non-migrating co-national in a 'national-group' sample. Then for each of these analytical samples we estimate net differences in ARMOs between migrants observed at different European destinations and stayers observed at the home country. We estimate three nested models:

The baseline model (equation (1)) just includes *current country of residence* along with the control variables for gender and survey years, represented in the equation with the Matrix  $X_1$ . Note that the current country of residence is the country of birth for stayers and the destination country for migrants. Model 2 (equation (2)) adds two indicators of human capital, education, and age (including its squared term) (Matrix  $X_2$ ), since they are relevant predictors of migratory behaviour.<sup>9</sup> These two specifications allow us to measure the differential in ARMOs between migrants and stayers from the same country with and without human capital controls.<sup>10</sup> Comparing these estimates across equations (1) and (2) thus allows us to test whether motivational selectivity is driven by educational selectivity or constitutes a distinct form of selection hitherto understudied. Model 3 introduces controls for unemployment experiences and social isolation (the latter variable only available for respondents migrating within the EEA) as a means to test for potential experiential bias, as explained above.<sup>11</sup> This set of variables is denoted by Matrix  $X_3$  in equation (3). The effect of perceived discrimination on ARMOs is tested in a separate model fitted to migrants only.<sup>12</sup>

The three models are nested and specified as follows:

$$y = \beta_0 + \beta_1 \text{country} + X_1 \delta + \varepsilon \quad (1)$$

$$y = \beta_0 + \beta_1 \text{country} + X_1 \delta + X_2 \gamma + \varepsilon \quad (2)$$

$$y = \beta_0 + \beta_1 \text{country} + X_1 \delta + X_2 \gamma + X_3 \phi + \varepsilon \quad (3)$$

The reference category for *country of residence* in all specifications is stayers. This provides a straightforward interpretation of the coefficient for this variable ( $\beta_1$ ) as the difference in motivational orientations between migrants living in a given European destination and their non-migrating co-nationals.

### Descriptive Statistics

Table 2 below presents summary statistics for the ARMOs scale and the main explanatory variables used in the empirical analyses. Note that there are significant differences in the gender composition of migration flows. Outflows from the Andean countries are slightly feminized, while those from Turkey and Morocco are strongly masculinized (outflows from the remaining migrant groups are more sex-balanced). Note also that most migrant groups are, on average, more educated than non-migrants with the exception of Andean migrants, which seem less educated on average, in line with the results of previous studies (Bertoli, Moraga and Ortega, 2013).<sup>13</sup> Distributions of ARMOs for recently arrived migrants and stayers across European destinations are shown in Figure 2.

### Results

Selectivity estimates for the main specification models are summarized in Table 3 (full tables for each ethnic group are available upon request) and presented graphically in Figure 3.<sup>14</sup> The first three rows of Table 3 report selectivity coefficients for recent EU migrants from rich countries migrating into rich EEA countries with a common official (or co-official) language. According to standard economic arguments, these are the cases where we should expect the least motivational selectivity, since migration costs between rich and culturally closed EEA countries should be low. Yet surprisingly we find the exact opposite pattern: high positive selectivity for British migrants into Ireland, German migrants into Austria and Switzerland, and French migrants into Belgium, Luxemburg, and Switzerland. Introducing human capital variables (Model 2) reduces the size of the selectivity coefficient in all cases but cannot explain selectivity away. Also, although we find some differences by gender in the size of the coefficients, these differences are not statistically significant in pooled interacted models.<sup>15</sup> Estimates are robust to experiential controls (Model 3).

The next two rows present the selectivity coefficients for migrants from two Eastern European countries, Poland and Romania. In this case, sample sizes allow us to compare two different destinations for each national group. Recent Polish migrants are found in sufficient numbers in Britain and Ireland, on the one hand, and in Scandinavian countries (Finland, Denmark, Sweden, and Norway) on the other hand. The interest of this comparison is that the United Kingdom and Ireland are 'Liberal' welfare states with deregulated labour markets

Table 2. Summary statistics

	ARMOs	Age	Female	Education			Labour-market history			Social isolation	N
				Low	Middle	High	Never unemployed in past 5 years	Currently unemployed	Currently inactive		
United Kingdom	3.20 (0.01)	47.81 (0.18)	53.6 (0.5)	44.65 (0.47)	25.86 (0.43)	27.49 (0.42)	39.9 (0.5)	4.6 (0.2)	42.5 (0.5)	12.2 (0.3)	13,455
British in Ireland	3.70 (0.11)	40.34 (1.98)	54.9 (6.3)	18.53 (4.88)	34.13 (6.0)	47.32 (6.35)	28.8 (5.6)	22.5 (5.2)	35.7 (6.2)	12.3 (4.2)	71
Germany	3.16 (0.01)	48.18 (0.14)	49.5 (0.4)	14.56 (0.28)	66.15 (0.37)	18.93 (0.31)	36.1 (0.4)	4.6 (0.2)	44.9 (0.4)	13.2 (0.3)	18,156
Germans in Switzerland and Austria	3.72 (0.07)	34.38 (0.92)	51.7 (4.6)	4.91 (1.97)	59.36 (4.51)	35.73 (4.37)	50.3 (4.6)	3.3 (1.6)	26.1 (4.2)	20.3 (3.8)	127
France	2.66 (0.01)	46.36 (0.19)	52.5 (0.5)	28.71 (0.47)	53.31 (0.52)	17.86 (0.40)	31.7 (0.5)	5.9 (0.3)	40.9 (0.5)	20.4 (0.4)	11,392
Poland	3.44 (0.01)	43.71 (0.17)	51.9 (0.5)	35.08 (0.45)	49.26 (0.47)	15.47 (0.33)	28.4 (0.4)	7.0 (0.2)	45.8 (0.5)	18.2 (0.4)	11,782
French in French-speaking countries	3.38 (0.12)	32.54 (1.11)	46.4 (6.5)	10.53 (3.89)	43.36 (6.51)	46.11 (6.52)	49.7 (6.6)	3.9 (2.3)	16.8 (4.8)	25.0 (5.6)	66
Polish in the United Kingdom and Ireland	3.85 (0.08)	29.32 (0.70)	45.9 (4.4)	28.40 (4.18)	35.56 (4.04)	30.87 (3.95)	44.6 (4.4)	20.9 (3.6)	16.8 (3.1)	17.1 (3.0)	169
Polish in Scandinavia	3.68 (0.13)	32.96 (1.29)	51.1 (7.4)	12.84 (4.95)	48.71 (7.38)	38.45 (7.19)	46.4 (7.4)	17.1 (5.6)	12.8 (4.9)	21.6 (6.1)	47
Romania	3.68 (0.03)	45.97 (0.41)	53.9 (1.3)	34.33 (1.21)	50.87 (1.27)	12.37 (0.87)	28.9 (1.2)	4.4 (0.6)	50.6 (1.3)	10.6 (0.8)	3,945
Stayers <sup>a</sup>	3.46 (0.14)	31.93 (1.11)	57.6 (7.3)	47.15 (7.41)	40.18 (7.32)	12.66 (4.96)	46.0 (7.4)	19.5 (5.7)	14.5 (5.3)	20.0 (5.8)	48
Romanians in Spain	3.90 (0.16)	32.09 (1.24)	56.1 (7.3)	33.54 (6.75)	44.70 (7.45)	21.76 (5.92)	37.2 (7.3)	22.0 (6.6)	26.1 (6.1)	14.7 (4.7)	55
Romanians in rich countries	4.08 (0.02)	37.15 (0.29)	52.4 (1.0)	73.40 (0.78)	19.26 (0.70)	7.09 (0.43)	19.4 (0.7)	14.2 (0.7)	56.9 (0.9)	5.8 (0.4)	3,836
Stayers	3.47 (0.15)	32.83 (1.46)	37.7 (7.8)	30.81 (7.27)	42.69 (7.91)	24.03 (6.75)	21.8 (6.5)	15.2 (5.4)	31.4 (7.4)	29.4 (7.4)	43
Turks in rich countries											

<sup>a</sup>Survey weights not available for Romania in the ESS rounds.

Source: European Social Survey (2002–2014).

(continued)

Table 2. Continued

	ARMOs	Age	Female	Education			Labour-market history				N
				Low	Middle	High	Employed	Unemployed	Inactive	Other/NA	
Morocco	3.64 (0.02)	36.30 (0.28)	49.0 (1.1)	72.92 (0.97)	22.37 (0.91)	4.66 (0.46)	86.3 (0.7)	2.0 (0.3)	9.1 (0.6)	2.6 (0.3)	2,106
Moroccans in Spain	3.30 (0.16)	31.02 (1.37)	31.4 (7.2)	76.63 (6.51)	11.89 (5.16)	8.21 (4.03)	63.8 (7.5)	11.5 (5.0)	24.6 (6.7)	0.0 (omitted)	45
Brazil	2.83 (0.02)	41.42 (0.30)	52.3 (0.9)	51.71 (0.93)	31.47 (0.87)	16.36 (0.69)	53.0 (0.9)	14.3 (0.7)	31.2 (0.9)	1.5 (0.2)	2,956
Brazilians in Portugal	3.47 (0.12)	30.55 (1.42)	56.7 (7.2)	36.51 (7.01)	48.83 (7.04)	14.66 (4.62)	54.4 (7.1)	15.7 (5.0)	30.0 (6.9)	0.0 (omitted)	73
Andean countries	3.32 (0.01)	39.04 (0.22)	50.5 (0.7)	33.38 (0.65)	41.14 (0.68)	25.17 (0.60)	59.1 (0.7)	7.5 (0.4)	30.9 (0.6)	2.5 (0.2)	5,223
Andeans in Spain	3.49 (0.11)	31.70 (1.33)	52.8 (6.1)	41.10 (5.98)	40.51 (6.00)	18.39 (4.59)	71.6 (5.6)	10.9 (3.9)	17.6 (4.7)	0.0 (omitted)	73

Source: European Social Survey (2002–2014) and World Value Survey (waves 2004–2009 and 2010–2014).



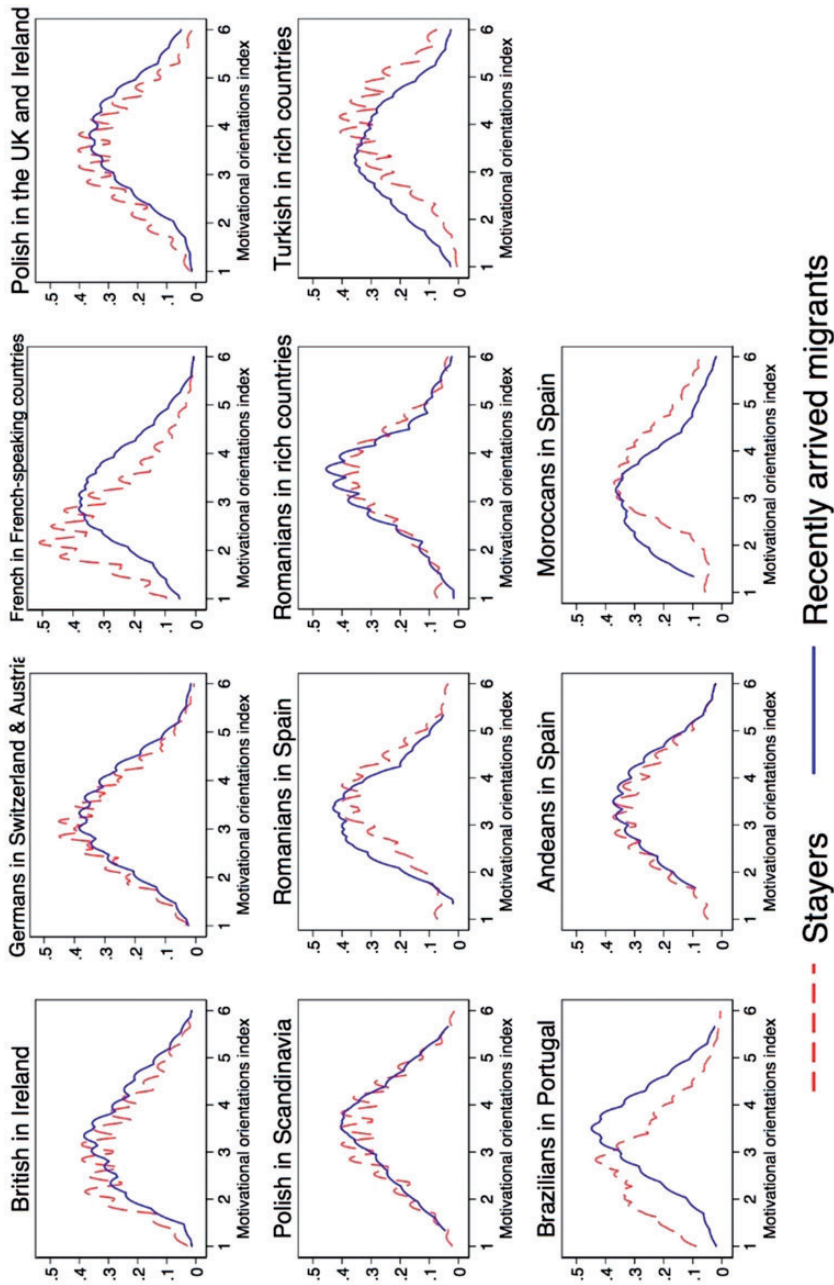


Figure 2. Distribution of ARMOs for recently arrived migrants and stayers

**Table 3.** OLS regression coefficients (unweighted models)—migrants that have been living continuously in destination country for up to 5 years. Summary table of main models

	M1	M2	M3
British in Ireland	0.534*** (0.106)	0.402*** (0.100)	0.391*** (0.100)
N	13,526	13,526	13,526
R <sup>2</sup>	0.271	0.357	0.358
Germans in Switzerland and Austria	0.444*** (0.0772)	0.223** (0.0728)	0.215** (0.0727)
N	18,283	18,283	18,283
R <sup>2</sup>	0.175	0.271	0.273
French in French-speaking countries <sup>a</sup>	0.615*** (0.111)	0.413*** (0.107)	0.411*** (0.107)
N	11,458	11,458	11,458
R <sup>2</sup>	0.117	0.177	0.178
Polish in the United Kingdom and Ireland	0.124 <sup>+</sup> (0.0643)	-0.0587 (0.0616)	-0.0587 (0.0617)
Polish in Scandinavia <sup>b</sup>	-0.0818 (0.121)	-0.224 <sup>+</sup> (0.115)	-0.225* (0.115)
N	11,998	11,998	11,998
R <sup>2</sup>	0.342	0.407	0.408
Romanians in Spain	-0.304* (0.119)	-0.430*** (0.116)	-0.474*** (0.116)
Romanians in rich countries <sup>c</sup>	0.0866 (0.146)	-0.0468 (0.142)	-0.0637 (0.142)
N	4,048	4,048	4,048
R <sup>2</sup>	0.337	0.377	0.380
Turkish in rich countries <sup>d</sup>	-0.561*** (0.148)	-0.614*** (0.146)	-0.597*** (0.146)
N	3,879	3,879	3,879
R <sup>2</sup>	0.228	0.261	0.262
Brazilians in Portugal	0.717*** (0.153)	0.612*** (0.152)	0.610*** (0.152)
N	3,029	3,029	3,029
R <sup>2</sup>	0.107	0.129	0.130
Andeans in Spain	0.251 <sup>+</sup> (0.136)	0.217 (0.135)	0.235 <sup>+</sup> (0.135)
N	5,296	5,296	5,296
R <sup>2</sup>	0.200	0.220	0.222
Moroccans in Spain	-0.430* (0.201)	-0.461* (0.201)	-0.476* (0.202)
N	2,151	2,151	2,151
R <sup>2</sup>	0.240	0.243	0.249
Gender, survey year, and hedonism	Yes	Yes	Yes
Human capital variables	No	Yes	Yes
Isolation and labour-market experiences	No	No	Yes

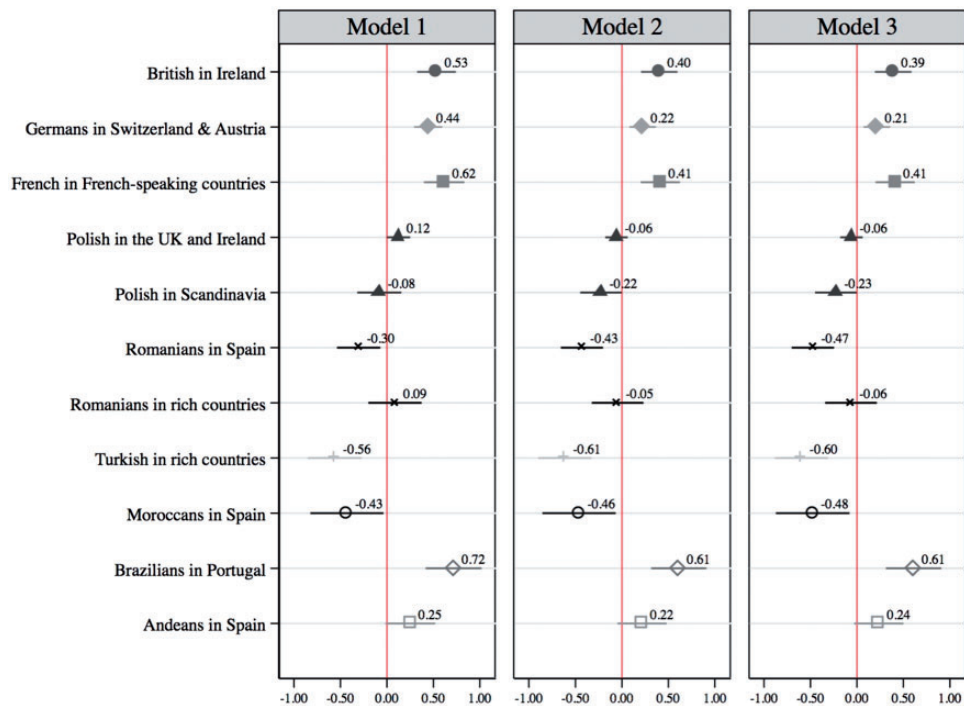
Reference category: non-migrants (stayers). <sup>+</sup> $P < 0.10$ , \* $P < 0.05$ , \*\* $P < 0.01$ , \*\*\* $P < 0.001$ .

<sup>a</sup>Belgium, Luxembourg, and Switzerland.

<sup>b</sup>Denmark, Finland, Norway, and Sweden.

<sup>c</sup>Austria, Belgium, Denmark, Finland, France, Germany, Ireland, Luxembourg, The Netherlands, Norway, Sweden, Switzerland, and the United Kingdom.

<sup>d</sup>Austria, Belgium, Denmark, Finland, France, Germany, Ireland, The Netherlands, Norway, Sweden, Switzerland, and the United Kingdom.



**Figure 3.** OLS regression coefficients (unweighted models)—migrants that have been living continuously in destination country for up to 5 years

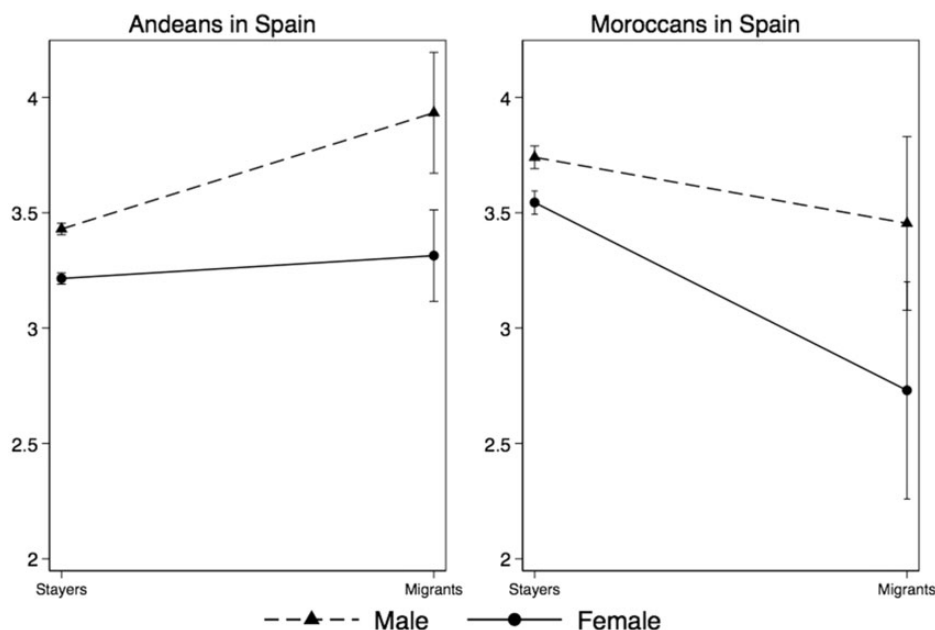
Note: Confidence intervals 95 per cent.

Control variables: Gender, survey year, and hedonism (Model 1) + age, age squared, and education (Model 2) + social isolation and labour-market experiences (Model 3).

and high wage dispersion, whereas Scandinavian countries are the home of the ‘Social-Democratic’ model characterized by generous welfare provision and a very compressed income distribution (after taxes). According to standard economic models, we should expect positive selection in the former two countries, while welfare magnet arguments would lead us to expect negative selection in the latter. Polish migrants into the United Kingdom and Ireland do indeed seem positively selected in Model 1, but note motivational differences between migrants and stayers disappear once we introduce human capital controls in Model 2. Hence we must conclude motivational selectivity of Polish migrants into United Kingdom and Ireland is entirely driven by human capital selectivity. In contrast, Polish migrants in Scandinavia seem to be negatively selected on ARMOs once differences in human capital between migrants and stayers are accounted for. Results seem therefore consistent with the magnet hypothesis. Yet we note this effect is small when compared to other selectivity coefficients found in this study. Model 3 also shows

estimates are robust to experiential controls. There are no significant gender differences in selectivity for Polish migrants in any of the two destinations considered.

Romania is the least economically developed country of the EEA in our data set. It is also the latest country that accessed the EU (in 2007). Restrictions to the free movement of Romanian workers were imposed across the EEA. In most EU countries in our data set (Spain, France, Germany, Austria, The Netherlands, Luxemburg, Belgium, and the United Kingdom) free movement restrictions lasted up until 2014. Despite these restrictions, Romanian migrants have become the largest migrant group in Spain (accounting for roughly 700,000 by 2016). Romanian is a Romance language, and hence it is close to Spanish. We also note up until 2012, all migrants in Spain, including undocumented migrants, had free and unrestricted access to healthcare (Björngren-Cuadra, 2012). Sample sizes allows us to compare the selectivity patterns of recent Romanian migrants into Spain with those migrating to all other rich EEA countries combined (Austria, Belgium



**Figure 4.** Estimated ARMOs for recently arrived migrants and stayers by gender. Models with an interaction term of gender and migration status

Note: Level of confidence: 0.90.

Denmark, Finland, France, Germany, Ireland, The Netherlands, Norway, Sweden, Switzerland, and the United Kingdom). Partially consistent with standard economic and magnet models, we find clear signs of negative motivational selectivity for Romanians in Spain, although we do not find signs of positive selectivity in rich EEA countries combined (particularly after controls for human capital are introduced). Negative selectivity in Spain is found for both male and female Romanian migrants alike (not shown). Estimates are robust to experiential controls (Model 3).

The samples for recent migrants from Morocco and Turkey in the ESS are the smallest in our data set, and this takes a toll on statistical power. To improve on statistical efficiency, we have considered again rich EEA countries as one single destination for Turkish migrants. Our results suggest strong negative selectivity of Turkish migrants in rich European countries. We note we find no significant gender differences in selectivity for this group. Results are robust to experiential controls. Recently arrived Moroccans are only found in sufficient numbers in Spain, where they are the second largest migrant group after Romanians. Moroccan migrants into Spain appear again as clearly negatively selected on ARMOs both before and after human capital and experiential controls. Interestingly in this case, and in consonance with the gender-traditionalism

hypothesis, we find this effect seems driven by Moroccan women, the majority of whom migrate for family reasons.<sup>16</sup> This is revealed by a significant gender interaction, which is presented graphically in Figure 4 below.

Finally, we can estimate ARMOs selectivity for two Latin American groups. Brazilians in Portugal and Andean migrants in Spain. Again there are no language barriers for these two groups of migrants, although geographic distance for Latin American migrants is obviously the largest of all groups considered in this study. Interestingly, we find strong positive motivational selectivity for recent Brazilian migrants, both men and women, into Portugal. Indeed Brazilian migrants seem the most positively selected on ARMOs of all the migrant groups observed in this study both before and after human capital and experiential controls. Finally, we also find signs suggestive of positive selectivity for Andean migrants in Spain, although in this case the selectivity estimate does not reach statistical significance after controlling for human capital. Pooled gender interactions reveal, however, larger positive selectivity for Andean men after human capital and experiential controls (see Figure 4).

### Robustness Checks

Two types of potential estimation bias are of particular concern in this study: systematic sampling bias and what

**Table 4.** Comparing selectivity estimates (OLS) across ESS and WVS origin samples—migrants that have been living continuously in destination country for up to 5 years. Summary table of main models

	M2 ESS for stayers	M2 WVS for stayers
British in Ireland	0.402*** (0.100)	0.351* (0.170)
N	13,526	1,102
R <sup>2</sup>	0.357	0.357
Germans in Switzerland and Austria	0.223** (0.0728)	-0.0392 (0.0981)
N	18,283	4,092
R <sup>2</sup>	0.271	0.296
French in French-speaking countries <sup>a</sup>	0.413*** (0.107)	-0.0366 (0.164)
N	11,458	1,049
R <sup>2</sup>	0.177	0.246
Polish in the United Kingdom and Ireland	-0.0587 (0.0616)	-0.158 (0.0996)
Polish in Scandinavia <sup>b</sup>	-0.224 <sup>+</sup> (0.115)	-0.362** (0.112)
N	11,998	2,132
R <sup>2</sup>	0.407	0.360
Romanians in Spain	-0.430*** (0.116)	-0.279 <sup>+</sup> (0.161)
Romanians in rich countries <sup>c</sup>	-0.0468 (0.142)	0.0342 (0.136)
N	4,048	3,034
R <sup>2</sup>	0.377	0.400
Turkish in rich countries <sup>d</sup>	-0.614*** (0.146)	-0.542* (0.240)
N	3,879	2,886
R <sup>2</sup>	0.261	0.205
Gender, survey years, and hedonism orientation	Yes	Yes
Human capital variables	Yes	Yes
Isolation and labour-market experiences	No	No

Notes: Reference category: non-migrants (stayers). <sup>+</sup>  $P < 0.10$ , \* $P < 0.05$ , \*\* $P < 0.01$ , \*\*\* $P < 0.001$ .

<sup>a</sup>Belgium, Luxembourg, and Switzerland.

<sup>b</sup>Denmark, Finland, Norway, and Sweden.

<sup>c</sup>Austria, Belgium, Denmark, Finland, France, Germany, Ireland, Luxembourg, The Netherlands, Norway, Sweden, Switzerland, and the United Kingdom.

<sup>d</sup>Austria, Belgium, Denmark, Finland, France, Germany, Ireland, The Netherlands, Norway, Sweden, Switzerland, and the United Kingdom.

we have termed destination bias. We have carried out several checks to tests for the robustness of our findings to these potential sources of bias.

Concerns about potential sampling bias arise from using two different samples for origin countries, the ESS

and the WVS. To address these concerns, we have replicated our models for migrants from ESS-sampled countries (i.e. France, Britain, Germany, Poland, Romania, and Turkey) using this time the WVS as the sample for stayers (see Table 4). This way we can replicate the estimation method we use for the three migrant groups for which we only have the WVS as the sample frame for stayers (i.e. Moroccan, Brazilian, and Andean migrants) and thus test, indirectly, whether the WVS introduces systematic sampling bias in our estimates. We note only in two cases, French migrants in French-speaking EEA countries and German migrants in German-speaking EEA countries, we fail to replicate our selectivity findings when we change the sample (for stayers) from the ESS to the WVS. For all remaining origin–destination pairs tested (i.e. six of eight), the main findings for Model 2 hold regardless of the sample used.<sup>17</sup> Note ESS country samples are much larger than those of the WVS (more than 10 times larger for French stayers and more than 4 times larger for German stayers). This means our failure to replicate selectivity estimates for French and German migrants is most probably due to the loss of statistical power that comes with the drastic reduction in sample size. Although we would indeed recommend caution when comparing selectivity estimates across samples (i.e. across European and non-European migrants), based on this replication exercise, we cannot conclude using the WVS to sample stayers introduces systematic bias in our estimates for non-European migrants.

Robustness tests also suggest our main findings are not spuriously driven by destination bias. This conclusion is based on two sets of findings. First, we have shown (see Models 3 in Table 3) all coefficients capturing average differences between migrants and stayers are robust to controls for unemployment and extreme social isolation (the latter variable only available in the ESS sample). Second, we further find perceived discrimination at destination, an experience that obviously can only be tested on migrant respondents, shows no significant association with migrants' ARMOs. Indeed none of the three extreme experiences tested does (see Table 5). We conclude that if such potentially traumatic experiences as involuntary unemployment, social isolation, and perceived discrimination at destination have no impact on migrants' ARMOs, it is unlikely that other less extreme experiences currently unobserved would. The most plausible interpretation of the reported findings is therefore selectivity of migration flows on motivational orientations.

**Table 5.** Migrants' ARMOs scores are unaffected by extreme experiences at destination—fixed-effects OLS regression coefficients

Social isolation (respondent meets socially only once a month or less)	0.009 (0.065)
<i>Labour-market history</i> (reference never unemployed in past 5 years)	
Currently unemployed	0.072 (0.082)
Currently inactive	-0.032 (0.07)
Currently employed, past unemployed	0.012 (0.067)
Perceived discrimination	0.023 (0.068)
Constant	2.953*** (0.261)
Observations	1,171
R-squared	0.217
Sigma $\mu$	0.171
Sigma $e$	0.842
Rho	0.040

Note:  $^+P < 0.10$ ,  $^*P < 0.05$ ,  $^{**}P < 0.01$ ,  $^{***}P < 0.001$ .

All models control for gender, age, age squared, education, survey years, and hedonism orientation.

## Discussion

Studying selectivity on motivational orientations is important because it helps better understand the migration decision as well as to assess what economists heartlessly call the 'quality' of migrant workers. This has obvious implications for the ongoing debates about the drains and gains of international migration. If migrant-sending countries lose their most achievement-oriented individuals, the potential economic costs of migration will go beyond human capital drains. We find, however, no universal pattern of positive selectivity in our data and no sign that the poorest countries are necessarily those most affected by positive motivational selectivity (what we could term the *heart* drain). For example, of the two poorest migrant-sending origins in our data set, Morocco and Andean countries, we find signs of positive selectivity for (male) Andean migrants but negative for (female) Moroccans. Likewise, of the four upper-middle-income countries in our data set (Brazil, Turkey, Poland, and Romania), we find clear signs of positive selection for Brazilian migrants into Portugal but negative for Turks into rich EEA countries and for Romanians into Spain. Finally, and perhaps most surprisingly, we find clear signs of positive selectivity on motivational traits for individuals from rich European countries

migrating into rich and culturally close European destinations (i.e. French migrants into Belgium, Luxembourg, and Switzerland; German migrants into Austria and Switzerland; and British migrants into Ireland). These findings contradict the predictions of standard economic models (according to which positive selectivity should increase with migration costs and/or with the difference in GDP between sending and receiving countries), as well as those of the common migrant personality model in social psychology (according to which we should expect positive selectivity across the board).<sup>18</sup> Only two of our theoretically driven expectations seem to be (at least partially) borne by the evidence: *first*, and in accordance with the welfare magnet hypothesis, we find negative selectivity for Polish migrants in Scandinavia (but not in United Kingdom and Ireland); *second*, and in accordance with the gender traditionalism hypothesis, we find negative motivational selectivity for Moroccan women in Spain. Overall, our findings suggest a complex and non-universal pattern of motivational selectivity. This pattern calls into question the idea that migrants are *always* the most motivated and ambitious individuals of their home countries.

The positive selectivity of migrants moving between rich and culturally close European societies is a particularly puzzling finding that invites an explanation. Perhaps in very affluent societies, where macroeconomic push factors are largely absent, motivational differences between individuals come to the fore as predictors of the migration decision, thus leading to the observed positive selectivity patterns found for Britons, French, and Germans in our data. These patterns, which cannot be explained by standard theories of international migration, are probably best interpreted as reflecting the specific features of what we could call, following Favell (2008), the mobility of the 'Eurostars'. In sharp contrast, in low-income European societies, the combination of harsh domestic economic conditions and very low migration costs (after the EU enlargement) could explain negative motivational selectivity, particularly amongst those migrants attracted to EU countries with a high demand for low-skilled labour. This combination of domestic and destination factors, in the specific context of European integration, could explain, in particular, the negative motivational selectivity of Romanians in Spain. The evidence on motivational selectivity presented in this study reveals the highly segmented nature of internal migration in Europe.

Studying motivational selectivity can contribute to two interrelated strands of sociological research. First, it can contribute to the so-called epidemiological literature dealing with the socio-economic impact of culture. Epidemiological approaches exploit the migration

phenomenon as a source of causal identification of cultural effects by studying how culture of ancestry influences migrants' behaviour at the country of destination (for a review see [Fernandez, 2011](#)). The epidemiological method rests on the crucial assumption that migrants are not selected on either the cultural trait of interest nor on unobserved traits potentially affecting migrants' behaviour at destination (see [Fernández and Fogli, 2009](#); [Polavieja, 2015](#); [Finseraas and Kotsadam, 2017](#)). This assumption has been the subject of intense debate in the literature (see [Chou, 2017](#); [Polavieja, 2017](#)). The present study suggests that, although motivational selectivity is clearly not a universal phenomenon, it should be taken into account as a potential source of estimation bias in epidemiological research on culture, particularly when studying female migrants coming from highly traditional societies, as our findings for Moroccan women suggest.

Second, the study of motivational selectivity is also highly relevant for structural incorporation research. Researchers in this field typically compare the labour-market outcomes of migrants from different origins to those of the native population net of observed human capital characteristics to compute estimates of 'ethnic gaps'. These estimates have often been interpreted as reflecting the 'barriers' to a successful labour-market integration of migrants (for a discussion, see [Heath and Cheung, 2007](#)). But estimates of ethnic gaps could be highly biased by unobserved heterogeneity in migration flows. Accounting for migrants' selectivity in typically unobserved productivity-enhancing orientations can help us better assess the magnitude of these barriers because it helps us better distinguish between supply and demand drivers of ethnic differences in labour-market performance. For example, according to our findings, we should expect to find larger ethnic gaps for Romanian migrants in Spain than in other rich EEA countries, not because barriers to integration are necessarily larger in the former country but because Romanians migrating into Spain are negatively selected on motivational orientations that are potentially relevant for their economic success. Note testable hypotheses of this kind can bridge migration selectivity and structural incorporation research, two strands of the literature that usually run in parallel.

Before we conclude, we would like to acknowledge a number of limitations of the present study that future research should seek to address. First, we need larger samples both to improve on statistical power as well as to better exploit the identification potential of having migrants from one single origin observed at different destinations. Second, researchers should seek to devise new tests for potential destination bias. Our approach

here has been to test for the robustness of our findings to accounting for three of the most potentially traumatic experiences migrants can face at destination (unemployment, social isolation, and discrimination). Although we believe this extreme-experience test is a useful approach to address concerns about potential experiential bias, future research should also seek to test directly for the potentially biasing impact of acculturation in the host society.<sup>19</sup> Third, we also need to address potential immigrant-sampling bias, that is, the possibility that our migrant observations for specific origins are not representative of the true immigrant populations. This is likely to occur if the survey design introduces barriers for the selection of specific migrants into the sample. A case in point is host language skills, which are required to complete most surveys, including the ESS. If such skills are positively correlated with migrants' ARMOS, then the sampling criteria will inevitably lead to the overestimation of positive selectivity and the underestimation of negative selectivity of migrant groups whose home language is different from the language spoken at destination. We note we have no cases of positive selectivity for such groups in this study (all cases of positive selectivity found are native speakers of the host-country language), but we do have cases of negative selectivity (i.e. Polish in Scandinavia, Moroccans and Romanians in Spain, and Turkish migrants in rich EEA countries). This means we cannot rule out the possibility that our reported estimates of negative selectivity are downwardly biased (i.e. that negative motivational selectivity is actually larger for all these groups than our reported estimates suggest). Fourth, another limitation of the present study is our inability to address the potential biasing impact of return and secondary migration (i.e. the possibility that migrants particularly selected on ARMOS are more likely to return or leave to another destination country). In this case, we cannot even predict what the direction of this potential source of bias might be, as we do not observe these migrants ([Dumont and Spielvogel, 2008](#)). We note, however, that the selectivity estimates reported in this study will still provide an accurate description of the motivational qualities of the migrants that we do observe.

This study has provided the first systematic comparative analysis of motivational selectivity for a set of origin and destination countries. Our findings strongly suggest motivational selectivity is not a mere epiphenomenon of educational selectivity. Because ARMOS are likely implicated in labour-market attainment over and above migrants' education, motivational selectivity has clear implications for the structural incorporation of the first generation, as discussed above. Moreover, if ARMOS

are transmitted from parents to children, motivational selectivity will also have clear implications for the second generation. For all these reasons, we believe the study of motivational selectivity constitutes a very promising area of research that should attract the attention of both migration and stratification scholars.

### Notes

- 1 Ideally, we would have liked to complement ARMOs measures with indicators of psychological traits as typically used in the social psychology and the behavioural economics literatures. Yet psychological measures are simply not available for large cross-national samples.
- 2 To our knowledge, the study by Jaeger *et al.* (2010) is the only study that addresses the connection between migration and risk-attitudes, but the analysis is circumscribed to the case of internal migration in Germany.
- 3 Some studies have actually found negative educational selection for some groups in both Western Europe (Dronkers and de Heus, 2010) and the United States (Fernandez-Huertas, 2011).
- 4 Note forced migration and asylum seeking should also have implications for motivational selectivity. These types of migration are, however, not represented in the migrant groups analysed in this study.
- 5 Unfortunately, we cannot test network density effects in our data because we lack micro-level measures for network contact at destination.
- 6 Unfortunately, both sample size limitations and variable coding restrictions make it impossible for us to use a more restricted definition of recent migration.
- 7 We use the ESS as the sample for European stayers (including Turkish respondents) because the ESS ensures optimum levels of harmonization across countries and because it provides much larger sample sizes than the WVS.
- 8 We have tested for potential sampling bias by comparing selectivity coefficients estimated using the ESS and the WVS as alternative samples for European stayers. These tests, which are presented and discussed in the robustness checks section below, suggest our findings for non-European migrants are not driven by systematic sampling bias. Yet we recommend caution when comparing selectivity estimates for European and non-European migrants, as the sampling procedures of the ESS and the WVS are not identical.
- 9 Note because we are comparing migrants with stayers, human capital controls capture potential differences in ‘contextual’ educational attainment, i.e. attainment relative to origin not to destination (Feliciano and Lanuza, 2017).
- 10 Because WVS and ESS use different educational variables, we have constructed a harmonized educational scale with the following four categories: (i) low education (comprising incomplete secondary school/lower secondary and below); (ii) medium education (comprising complete secondary/advanced vocational degree, lower tier upper secondary, and upper tier upper secondary); (iii) higher education (comprising all education above upper secondary); and (iv) other (Refusal/Other/Don’t know/Don’t answer). We note there are differences in the distribution of this scale across the ESS and the WVS, which are most likely due to the different coding of the low and medium levels of education in the two surveys. Yet our selectivity estimates are robust to using alternative harmonization codes, as well as to using International Standard Classification of Education and years of schooling as alternative measures of education (the latter two variables available only for ESS data).
- 11 To purge the ARMOs scale from the potentially confounding influence of people’s hedonism, all regression models include an additional control for respondents’ gratification orientations, which are measured in the PVQ using the following formulation: ‘It is important to this person to have a good time; to “spoil” oneself’. Hedonism contamination is a particular issue for the risk item of the scale, the wording of which conflates risk orientations proper with hedonistic attitudes.
- 12 Note the vast majority of stayers are most unlikely to be discriminated against on the basis of language, religion, ethnicity, or race in their own home countries and cannot be discriminated against on the basis of nationality. This means we cannot test whether ARMOs gaps between migrants and stayers are affected by perceived discrimination, but we can test whether migrants’ ARMOs are.
- 13 We have further investigated educational selectivity using multinomial logistic models that control for respondents’ age, age squared, gender, and survey year. These models yield positive and significant educational selectivity estimates at the 95 per cent level of confidence for British in Ireland, Germans in German-speaking EEA countries, and French in French-speaking EEA countries; and at the



- 90 per cent level also for Turkish migrants in rich countries (results available upon request).
- 14 We report unweighted estimates because the Romanian sample in the 2006 ESS does not include country weights. We note, however, that the selectivity estimates for all the remaining origin–destination pairs tested in this study are fully robust to using country of origin weights for stayers and country of destination weights for migrants (results available upon request). This is hardly surprising since our regression models control for the standard sociodemographic variables that are used to produce post-stratification weights, which also means unweighted estimates are likely more consistent, unbiased and precise than weighted ones (see [Winship and Radbill, 1994](#); see also [Gelman, 2007](#)).
  - 15 For efficiency of presentation, we do not show the coefficients for gender interactions, which are available upon request. Significant gender interactions are presented graphically below (see [Figure 4](#)).
  - 16 According to data from the 2014 European Labour Force Survey (ELFS) *ad hoc* module, as much as 70 per cent of female North African migrants report family reasons as the main motive for migration. In contrast, only 36 per cent of migrant women from EU-15 and European Free Trade Association countries report family motives. Unfortunately, ELFS data do not allow to identify specific countries of origin, and hence we cannot study variation in migration motives for specific ethnic groups across different destinations.
  - 17 Note we cannot accurately replicate Model 3 for European migrants using the WVS because the WVS contains no information on social isolation. Hence, our focus is on Model 2.
  - 18 Obviously our findings can only be seen as a test of the migrant personality hypothesis if motivational orientations are considered part of the migrant personality prototype.
  - 19 Note eventual tests for acculturation bias will be inevitably hindered by the fact that variables measuring socio-cultural incorporation at destination are by definition not measured for non-migrants. A possible way forward is the use of two-step approaches with residualized variables as recently proposed by [Safi \(2017\)](#).

## Acknowledgements

Previous versions of this paper were presented at the European Consortium for Social Research 2016 Conference, University of

Oxford, UK, and the GEMM Project Midterm Conference, Plovdiv, Bulgaria. We wish to thank Evelyn Ersanilli, Amparo González, Jan O. Jonsson, Irena Kogan, Theresa Kuhn, Bram Lancee and Carolina Zuccotti for their helpful comments. All remaining errors are our own.

## Funding

This study received financial support from the following two projects: Growth, Equal Opportunities, Migration, and Markets, GEMM, funded by the European Commission Horizon 2020 programme (ID 649255), and New Approaches to Immigration Research, NewAIR, funded by the Spanish Ministry of Economy and Competitiveness (CSO2016-78452).

## References

- Beine, M., Docquier, F. and Özden, Ç. (2011). Diasporas. *Journal of Development Economics*, **95**, 30–41.
- Belot, M. V. and Hatton, T. J. (2012). Immigrant selection in the OECD. *The Scandinavian Journal of Economics*, **114**, 1105–1128.
- Bertoli, S., Moraga, J. F.-H. and Ortega, F. (2013). Crossing the border: self-selection, earnings and individual migration decisions. *Journal of Development Economics*, **101**, 75–91.
- Björngren-Cuadra, C. (2012). Right of access to health care for undocumented migrants in EU: a comparative study of national policies. *European Journal of Public Health*, **22**, 267–271.
- Boer, D. and Boehnke, K. (2016). What are values? How do they come from? A developmental perspective. In *Handbook of Value: Perspectives from Economics, Neuroscience, Philosophy, Psychology and Sociology*. Oxford, UK: Oxford University Press.
- Boneva, B. *et al.* (1998). Achievement, power, and affiliation motives as clues to (e)migration desires: a four-countries comparison. *European Psychologist*, **3**, 247–254.
- Boneva, B. S. and Frieze, I. H. (2001). Toward a concept of a migrant personality. *Journal of Social Issues*, **57**, 477–491.
- Bonin, H. *et al.* (2009). Native-migrant differences in risk attitudes. *Applied Economics Letters*, **16**, 1581–1586.
- Borjas, G. J. (1987). *Self-Selection and the Earnings of Immigrants*. Cambridge, MA: National Bureau of Economic Research.
- Bowles, S., Gintis, H. and Osborne, M. (2001). The determinants of earnings: a behavioral approach. *Journal of Economic Literature*, **39**, 1137–1176.
- Chiswick, B. R. (1978). The effect of Americanization on the earnings of foreign-born men. *Journal of Political Economy*, **86**, 897–921.
- Cortina, J. M. (1993). What is coefficient alpha? An examination of theory and applications. *Journal of Applied Psychology*, **78**, 98–104.
- Chiquiar, D. and Hanson, G. H. (2002). International migration, self-selection, and the distribution of wages: evidence from Mexico and the United States. National Bureau of Economic Research.

- Chou, W. (2017). Culture remains elusive: on the identification of cultural effects with instrumental variables. *American Sociological Review*, **82**, 435–443.
- Ciecuch, J., Davidov, E. and Algesheimer, R. (2015). The stability and change of value structure and priorities in childhood: a longitudinal study. *Social Development*, **25**, 503–527.
- Cunha, F. and Heckman, J. (2007). The technology of skill formation. National Bureau of Economic Research.
- De Jong, G. F. (2010). Expectations, gender, and norms in migration decision-making. *Population Studies*, **54**, 307–319.
- Donato, K. and Gabaccia, D. (2015). *Gender and International Migration*. New York, NY: Russell Sage Foundation.
- Dronkers, J. and de Heus, M. (2010). Negative selectivity of Europe's guest-worker immigration? The educational achievement of children of immigrants compared with the educational achievement of native children in their origin countries. In *From Information to Knowledge; from Knowledge to Wisdom: Challenges and Changes facing Higher Education in the Digital Age*. London: Portland Press Limited.
- Dumont, J. C. and Spielvogel, G. (2008). Return migration: a new perspective. In *International Migration Outlook*. Paris: OECD, pp. 161–222.
- Favell, A. (2008). *Eurostars and Eurocities: Free Movement and Mobility in an Integrating Europe*. Maiden, MA: Blackwell Publishing Ltd.
- Feliciano, C. (2005a). Educational selectivity in US immigration: how do immigrants compare to those left behind? *Demography*, **42**, 131–152.
- Feliciano, C. (2005b). Does selective migration matter? Explaining ethnic disparities in educational attainment among immigrants' children. *International Migration Review*, **39**, 841–871.
- Feliciano, C. and Lanuza, Y. R. (2017). An immigrant paradox? Contextual attainment and intergenerational educational mobility. *American Sociological Review*, **82**, 211–241.
- Fernandez, R. (2011). Does culture matter? In Benhabib, J., Jackson, M. O. and Bisin, A. (Eds.), *Handbook of Social Economics*. NorthHolland: Elsevier, pp. 481–510.
- Fernández, R. and Fogli, A. (2009). Culture: an empirical investigation of beliefs, work, and fertility. *American Economic Journal: Macroeconomics*, **1**, 146–177.
- Fernandez-Huertas, J. (2011). New evidence on emigrant selection. *The Review of Economics and Statistics*, **93**, 72–96.
- Finseraas, H. and Kotsadam, A. (2017). Ancestry culture and female employment: an analysis using second generation siblings. *European Sociological Review*, **33**, 382–392.
- Frieze, I. H. et al. (2004). Psychological differences in stayers and leavers: emigration desires in central and Eastern European university students. *European Psychologist*, **9**, 15–23.
- Frieze, I. H., Hansen, S. B. and Boneva, B. (2006). The migrant personality and college students' plans for geographic mobility. *Journal of Environmental Psychology*, **26**, 170–177.
- Gelman, A. (2007). Struggles with survey weighting and regression modelling. *Statistical Science*, **22**, 153–164.
- Hadler, M. (2006). Intentions to migrate within the European Union: a challenge for simple economic macro-level explanations. *European Societies*, **8**, 111–140.
- Heath, A. and Cheung, S. Y. (2007). *Unequal Chances: Ethnic Minorities in Western Labour Markets*. Oxford: Oxford University Press.
- Heckman, J. J. (2006). Skill formation and the economics of investing in disadvantaged children. *Science*, **312**, 1900–1902.
- Ichou, M. (2014). Who they were there: immigrants' educational selectivity and their children's educational attainment. *European Sociological Review*, **30**, 750–765.
- Ichou, M., Goujon, A. and the DiPAS team (2017). Immigrants' educational attainment: a mixed picture, but often higher than the average in their country of origin. *Population and Societies*, **541**, 1–4.
- Jaeger, D. A. et al. (2010). Direct evidence on risk attitudes and migration. *The Review of Economics and Statistics*, **92**, 684–689.
- Jokela, M. (2009). Personality predicts migration within and between US states. *Journal of Research in Personality*, **43**, 79–83.
- Jokela, M. et al. (2008). Temperament and migration patterns in Finland. *Psychological Science*, **19**, 831–837.
- Lu, M. (1999). Do people move when they say they will? Inconsistencies in individual migration behavior. *Population and Environment*, **20**, 467–488.
- McAdams, D. P. and Olson, B. D. (2010). Personality development: continuity and change over the life course. *Annual Review of Psychology*, **61**, 517–542.
- Massey, D. S. (1990). Social structure, household strategies, and the cumulative causation of migration. *Population Index*, **56**, 3–26.
- Massey, D. S. (1999). Why does immigration occur? A theoretical synthesis. In Hirschman, C., Kasinitz, P. and De Wind, J. (Eds.), *Handbook of International Migration*. New York, NY: Russell Sage Foundation, pp. 34–52.
- Massey, D. S. et al. (1993). Theories of international migration: a review and appraisal. *Population and Development Review*, **19**, 431–466.
- Milfont, T. L., Milojev, P. and Sibley, C. G. (2016). Values stability and change in adulthood: a 3-year longitudinal study of rank-order stability and mean-level differences. *Personality and Social Psychology Bulletin*, **42**, 572–588.
- Pascoe, E. A. and Richman, L. S. (2009). Perceived discrimination and health: a meta-analytic review. *Psychol Bull*, **135**, 531–554.
- Pedersen, P. J., Pytlikova, M. and Smith, N. (2008). Selection and network effects-migration flows into OECD countries 1990–2000. *European Economic Review*, **52**, 1160–1186.
- Polavieja, J. G. (2015). Capturing culture: a new method to estimate exogenous cultural effects using migrant populations. *American Sociological Review*, **80**, 166–191.
- Polavieja, J. G. (2017). Culture as a random treatment: a reply to Chou. *American Sociological Review*, **82**, 444–450.
- Polavieja, J. G. and Platt, L. (2014). Nurse or mechanic? Explaining sex-typed occupational aspirations amongst young children. *Social Forces*, **93**, 31–61.
- Polek, E., Van Oudenhoven, J. P. and Berge, J. M. T. (2011). Evidence for a “migrant personality”: attachment styles of

- Poles in Poland and Polish immigrants in the Netherlands. *Journal of Immigrant & Refugee Studies*, 9, 311–326.
- Portes, A. and Rumbaut, R. (1996). *Immigrant America: A Portrait*. Oakland, CA: University of California Press.
- Portes, A. and Sensenbrenner, J. (1993). Embeddedness and immigration: notes on the social determinants of economic action. *American Journal of Sociology*, 98, 1320–1350.
- Razin, A. and Wahba, J. (2015). Welfare magnet hypothesis, fiscal burden, and immigration skill selectivity. *Scandinavian Journal of Economics*, 117, 369–402.
- Roberts, B. W. *et al.* (2008). The development of personality traits in adulthood. *Handbook of personality: Theory and research*, 3, 375–398.
- Ryan, L. (2004). Family matters: (e)migration, familial networks and Irish women in Britain. *The Sociological Review*, 52, 351–370.
- Safi, M. (2017). Varieties of transnationalism and its changing determinants across immigrant generations: evidence from French data. *International Migration Review* (online version); doi: 10.1111/imre.12314.
- Schwartz, S. H. (2006). Value orientations: measurement, antecedents and consequences across nations. In Jowell, R. *et al.* (Eds.), *Measuring Attitudes Cross-Nationally: Lessons from the European Social Survey*. London: Sage.
- Silventoinen, K. *et al.* (2008). Selective international migration by social position, health behaviour and personality. *The European Journal of Public Health*, 18, 150–155.
- Stark, O. and Taylor, J. E. (1991). Migration incentives, migration types: The role of relative deprivation. *The Economic Journal*, 101, 1163–1178.
- Swidler, A. (2001). *Talk of Love: How Culture Matters*. Chicago: Chicago University Press.
- Takenaka, A. and Pren, K. A. (2010). Determinants of emigration: comparing migrants' selectivity from Peru and Mexico. *The Annals of the American Academy of Political and Social Science*, 630, 178–193.
- Vaisey, S. (2009). Motivation and justification: a dual-process model of culture in action. *American Journal of Sociology*, 114, 1675–1715.
- Winship, C. and Radbill, L. (1994). Sampling weights and regression analysis. *Sociological Methods and Research*, 23, 230–257.
- Yang, C. *et al.* (2016). Social relationships and physiological determinants of longevity across the human life span. *Proceedings of the National Academy of Sciences United States of America*, 113, 578–583.
- Javier G. Polavieja** (Oxford University PhD in Sociology, 2001) is Banco Santander Professor of Sociology and Director of the Discrimination and Inequality Lab at Universidad Carlos III de Madrid. His main fields of research are social stratification, economic sociology, political sociology, and migration research. His work has been published, amongst others, in the *American Journal of Sociology*, *American Sociological Review*, *European Sociological Review*, *Social Forces*, *Socio-Economic Review*, *Labour Economics*, and *International Migration*.
- Mariña Fernández-Reino** (PhD in Sociology, Universitat Pompeu Fabra, 2013) is Researcher at the Migration Observatory, University of Oxford, where she works on various aspects of migrants' integration in the United Kingdom. Her work has been published in *Research in Social Stratification and Mobility* and *Journal of Ethnic and Migration Studies*.
- María Ramos** (PhD in Economics, UAH 2016) is a Postdoctoral Research Fellow at the Discrimination and Inequality Lab, Universidad Carlos III de Madrid. Her main research interests include labour economics, educational mismatches, and migration research. Currently she is working in the Horizon 2020 project Growth, Equal Opportunities, Migration and Markets.